



Dedicated to innovation in aerospace

## **CORSICA: NLR-RIVM meeting**

Aircraft airconditioning system and exposure simulation |

5.1.2e

17/9/2020



Dedicated to Innovation in aerospace

This NLR document is company confidential to its recipients and should not be copied, distributed or reproduced in whole or in part, nor passed to any third party without prior written consent of NLR.

Use, intentionally or unintentionally of any of the content, information, or services in this document in a manner contrary to the objective of this document is not allowed.



## Overview

- Air conditioning in aircraft (simplified system views)
- Modelling
- SARS-CoV-2 related inputs and outputs



## Airconditioning system in aircraft

<https://www.aviationhunt.com/aircraft-air-conditioning-system/>



Normal operation (with all ambient air suppliers)



## Cabin compartments

<https://patentswarm.com/patents/US10414505B2>



## Cabin lay-out (Embraer site; public communication)

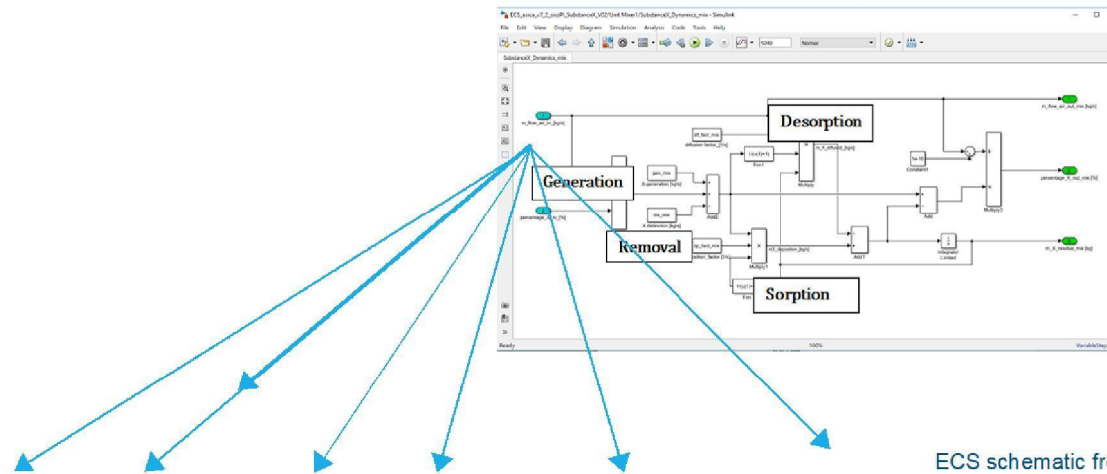
- Architecture
- In- and outflows positioning
- Quantities/directions during flight
- Boundary conditions (floor, wall, ceiling): temperature
- Separators

<https://www.embraercommercialaviation.com/clean-air-clean-cabin-safe-flight/>

modified



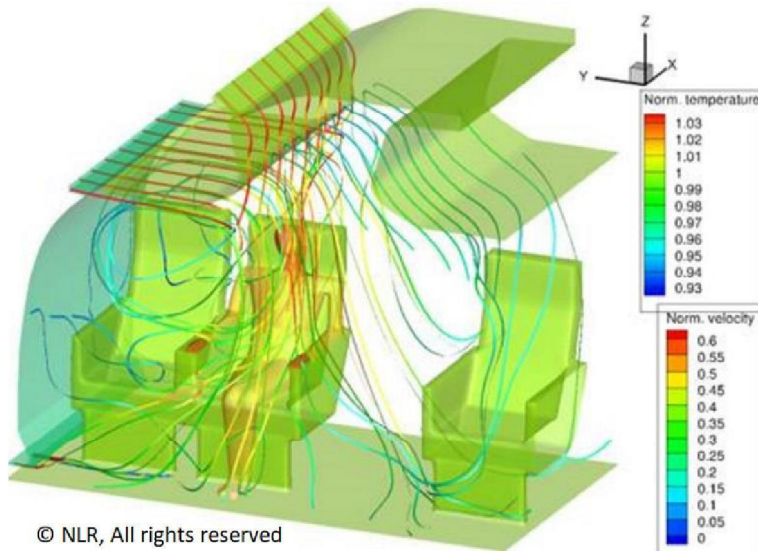
## Modelling: flow and particle spread in the system



ECS schematic from [1] H. Yin et al.,  
*"Modeling dynamic responses of aircraft environmental control systems by coupling with cabin thermal environment simulations,"*  
*Build. Simul.*, vol. 9, no. 4, pp. 459–468, 2016



## Modelling: flow and particle spread within compartments (with and without passengers)



Boeing, 2015



## Scenario selection for detailed simulations

Exposure, exposure time, frequency during flight for different scenarios:  
distance-based (no flow simulation)

- Index passenger coughs into face of neighbour
- Index passenger loads/unload luggage in bins
- Index crew member in aisle and at entrance
- Index passenger goes to toilet
- Etc..



## SARS-CoV-2 specific input data (from RIVM) for detailed simulation

- Virus droplets as exhaled: cloud of droplets or concentration in breathing zone (dependency on passenger characteristics (superspreader, country of origin, ...))
  - Droplets positions and velocity (or breathing zone)
  - Droplets geometry and weight (sphere radius + “density as water”)
  - Volume fraction virus (solid matter) in droplet
  - Exhaled air temperature
  - For different events: talking, cough, breathing (+ frequency), ..
- Effect of masks on the above characteristics (exhalation/inhalation; time on/off)
- Virus droplets as inhaled:
  - Breathing zone
- HEPA filter efficiency; if timely known in CORSICA; otherwise 100% efficiency assumed



## Consistency with previous RIVM studies

Potentially relevant (if already done by RIVM):

- Virus droplet geometry behaviour in air, after exhalation (effect of temperature, humidity, ozone, sunlight (UV effect), etc..)
- Splitting and/or co-agulation
- Absorption of droplets by cabin interior



## Potential simulation output (check with RIVM; for discussion)

Simulation output has to be relevant for infectivity of passengers (though dose – response is not modelled).

- Doses over a flight per passenger: total (weight? Volume?) of virus (or virus droplets) inhaled by passenger during the flight?
- Single exposure / Short and long duration limits?



Dedicated to Innovation in aerospace

# Fully engaged

## Royal Netherlands Aerospace Centre



**NLR Amsterdam**  
Anthony Fokkerweg 2  
1059 CM Amsterdam  
The Netherlands

p)   
e) [info@nlr.nl](mailto:info@nlr.nl) | [www.nlr.org](http://www.nlr.org)

**NLR Marknesse**  
Voorsterweg 31  
8316 PR Marknesse  
The Netherlands

p)   
e) [info@nlr.nl](mailto:info@nlr.nl) | [www.nlr.org](http://www.nlr.org)

